

GRAND DESIGNS AUSTRALIA

TV HOUSE
EXCLUSIVE
TAMAR
STEPPED
HOUSE

PETER
MADDISON
ANSWERS YOUR
QUESTIONS

GORDONS
BAY HOUSE

COASTAL
STYLE

Family-friendly
KITCHEN DESIGNS

Life
Style.

UNIVERSAL
MEDIACO

Issue 10.6

AUS\$9.95*

NZ\$12.99 (Incl. GST)

53



YOUR GRAND ADVENTURE STARTS HERE

100+
architecture
IDEAS

YOUR GUIDE TO
FOREVER FLOORING

SOLID COASTAL DESIGN

This seaside property brings together robust constructive materials and the comforts of a family home

WORDS KARSHA GREEN **PHOTOGRAPHY** TOM FERGUSON AND MICHAEL NICHOLSON



Every space in the home encourages the user to observe and appreciate the sparkling blue horizon

DETAILS

HOUSE Gordons Bay House
LOCATION Coogee, NSW
INITIAL BUDGET NA
FINAL COST \$5 million
DATE COMMENCED September 2014
DATE COMPLETED April 2016



WE LOVE

THE CONCRETE SLAB FACADE THAT CREATES A ROBUST, CONTEMPORARY AESTHETIC WHILE ALSO PROTECTING THE HOME AGAINST HARSH COASTAL CONDITIONS



a brilliant blue horizon, sweet salty air and the calming sounds of crashing waves. Living in a seaside property has so many positives, but a lot of those can also have a traumatising impact on a home if it's not built to withstand the environment. Homeowner, property developer and builder Paul Tizzzone of Zonie Constructions wanted to use an extensive amount of concrete to build his dream seaside home on an ocean-front reserve in Coogee, New South Wales.

"The coastal environment is very harsh. All building components are quickly corroded by salt, wind and rain. We had previously worked with concrete, but the client brief allowed us to push this material much further. It is very good for the climatic conditions and the corrosive environment that we were building in. The concrete has been used with a variety of finishes and textures to add a richness to the material," says architect Brian Bass from PopovBass.

Gordons Bay House is composed of a series of expressed concrete slabs that skew slightly on each level. This robust and resilient architectural expression is the envelope of the home, both externally and internally on the walls and ceilings. From street view, the concrete roof is folded down to create a sculptural element while also protecting the home from the western sun and providing privacy for the overlooked site. Internally, the visible concrete construction is contrasted with refined detailing and polished materials. Warm timber finishes don openings, recesses, doors, stairs and wall panels, complemented by pockets of soft, natural light from skylights, as well as full-height glazing.



PROJECT
GORDONS BAY HOUSE

The concrete architecture is expressed both internally and externally, softened by timber finishes and a rich colour palette

EDITOR'S FAVOURITE

THE SUBTLE LEVEL CHANGES THROUGHOUT THE HOME THAT CREATE PRIVACY BETWEEN SPACES WITHOUT THE PHYSICAL PRESENCE OF WALLS





Timber finishes in the kitchen add warmth to the home

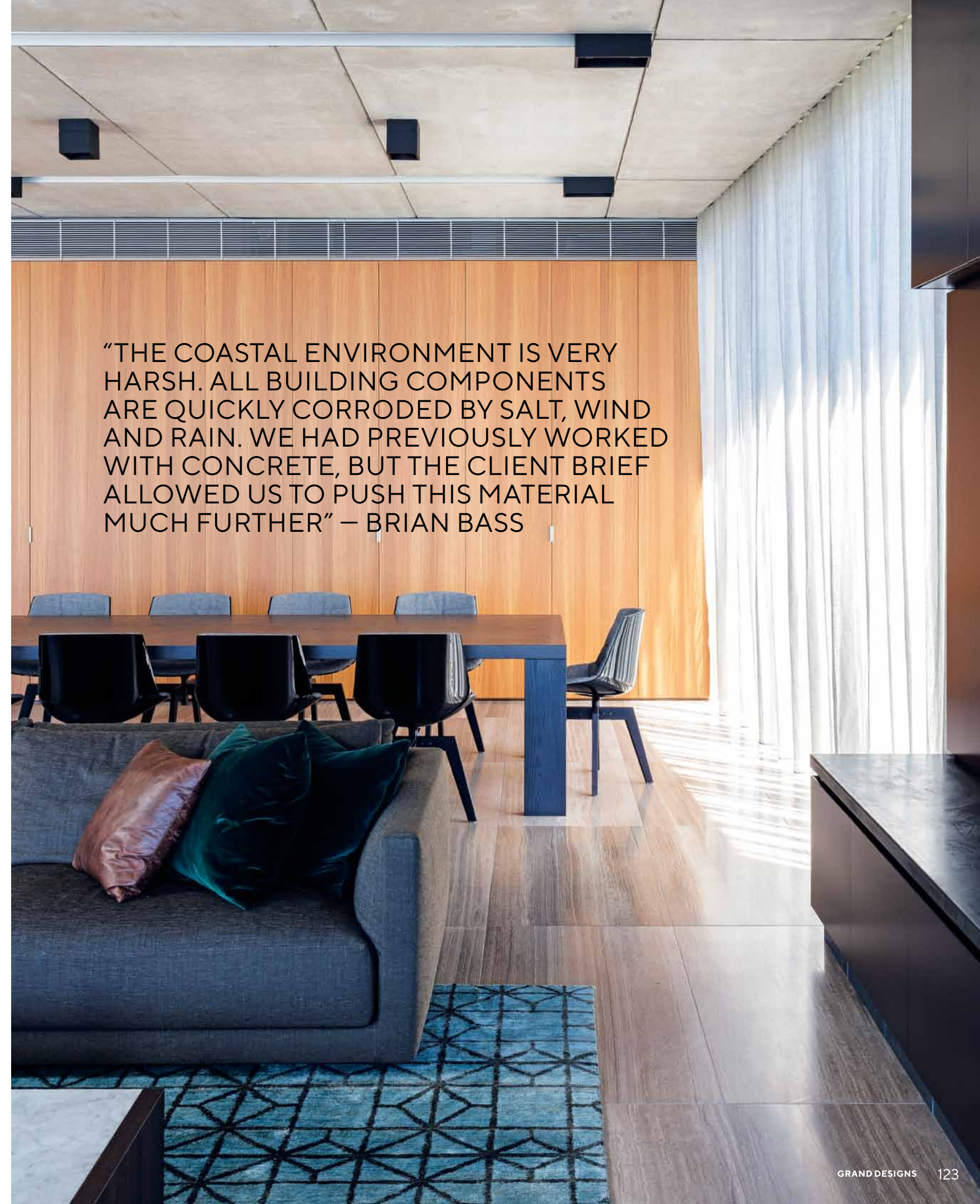


“The harsh marine environment demands a pragmatic approach to detail. This is reflected in the expressed concrete structure and robust detailing,” says Brian.

The home’s interior is configured around a central hall that links all the spaces both horizontally and vertically. Subtle level changes throughout the floor plan create a segregation of space in the absence of walls. Upon entry to the home, a slight dip in floor height draws the eye downward, opening up the view of the blue horizon beyond.

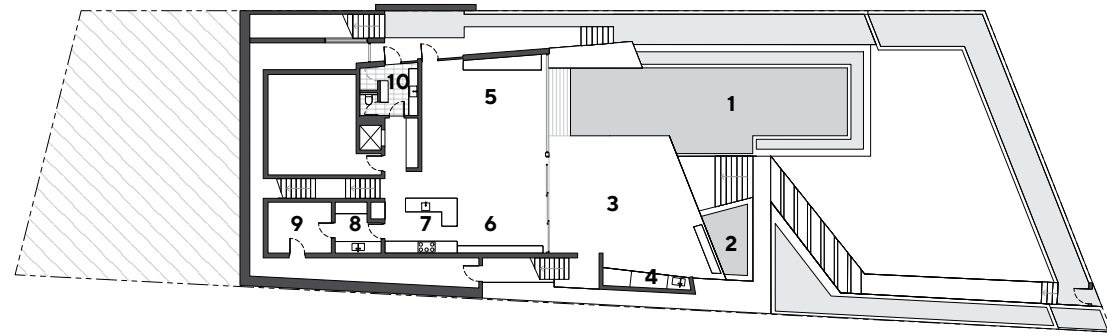
“The entry is very special,” says Brian. “The double-height space links all the levels of the home together ... just outside the arrival courtyard. To set the mood, we used gloss blue tiles on the walls. It’s a tough house but there are elements such as these that make the home welcoming and joyful.”

Gordons Bay House is an exploration of how robust construction and comfortable, refined design can work in harmony to create a seaside family home that will stand the test of time. 🏡

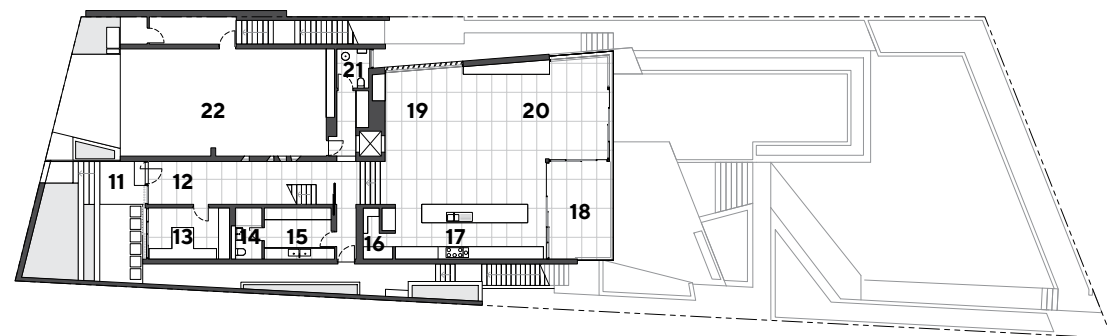


“THE COASTAL ENVIRONMENT IS VERY HARSH. ALL BUILDING COMPONENTS ARE QUICKLY CORRODED BY SALT, WIND AND RAIN. WE HAD PREVIOUSLY WORKED WITH CONCRETE, BUT THE CLIENT BRIEF ALLOWED US TO PUSH THIS MATERIAL MUCH FURTHER” – BRIAN BASS

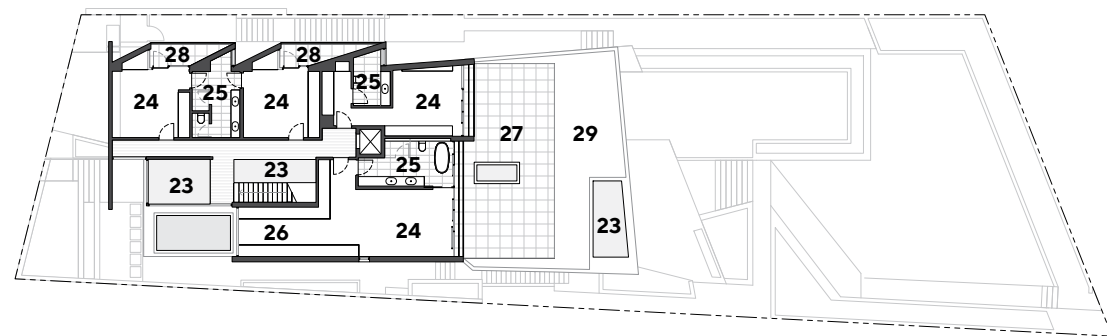
PROJECT
GORDONS BAY HOUSE



LOWER GROUND FLOOR PLAN



GROUND FLOOR PLAN



FIRST FLOOR PLAN

LEGEND

- 1 Pool
- 2 Pond
- 3 Terrace
- 4 BBQ
- 5 Lounge
- 6 Dining
- 7 Kitchen
- 8 Pantry
- 9 Plant
- 10 Bathroom
- 11 Entry court
- 12 Entry
- 13 Office
- 14 Bathroom
- 15 Laundry
- 16 Pantry
- 17 Kitchen
- 18 Balcony
- 19 Dining
- 20 Lounge
- 21 Powder room
- 22 Garage
- 23 Void
- 24 Bedroom
- 25 Ensuite
- 26 WIR
- 27 Terrace
- 28 Balcony
- 29 Non-trafficable area

BELOW The homeowner gave PopovBass the freedom to push the concrete material to its limits, and the result is an avant garde facade that will also withstand the seaside environment



PROJECT TEAM

ARCHITECT AND INTERIOR DESIGNER PopovBass, popovbass.com.au
BUILDER Zonie Constructions, zoniepropertygroup.com.au

STRUCTURAL TEAM

Structural engineer Australian Consulting Engineers (ACE)
Landscape architect Spirit Level Designs
Hydraulic engineer ITM Design

SERVICES

ESD Consultant Aspect Z

FIXTURES & FITTINGS

Tiles Worldstone, Skheme, Artedomus, Academy Tiles
Cement cladding Swiss Pearl
Pavers Eco Outdoors
Pool tiles Ezzari
Timber decking Nash Timbers
Paint finishes Dulux

Lighting Flos Lighting, Kreon
Furniture Poliform, Lowe Furniture
Fabric supplier Jim Thompson
Bathroom, kitchen manufacturer Gessi

FURNITURE & FURNISHINGS

Dining room chair MDF Italia
Dining room table Lowe Furniture
Rumpus room cushions Missoni
Bathroom towels Missoni
Bed Poliform
Playroom lounge suite, sofa Poliform
Armchair Poliform
Glass coffee table Poliform

